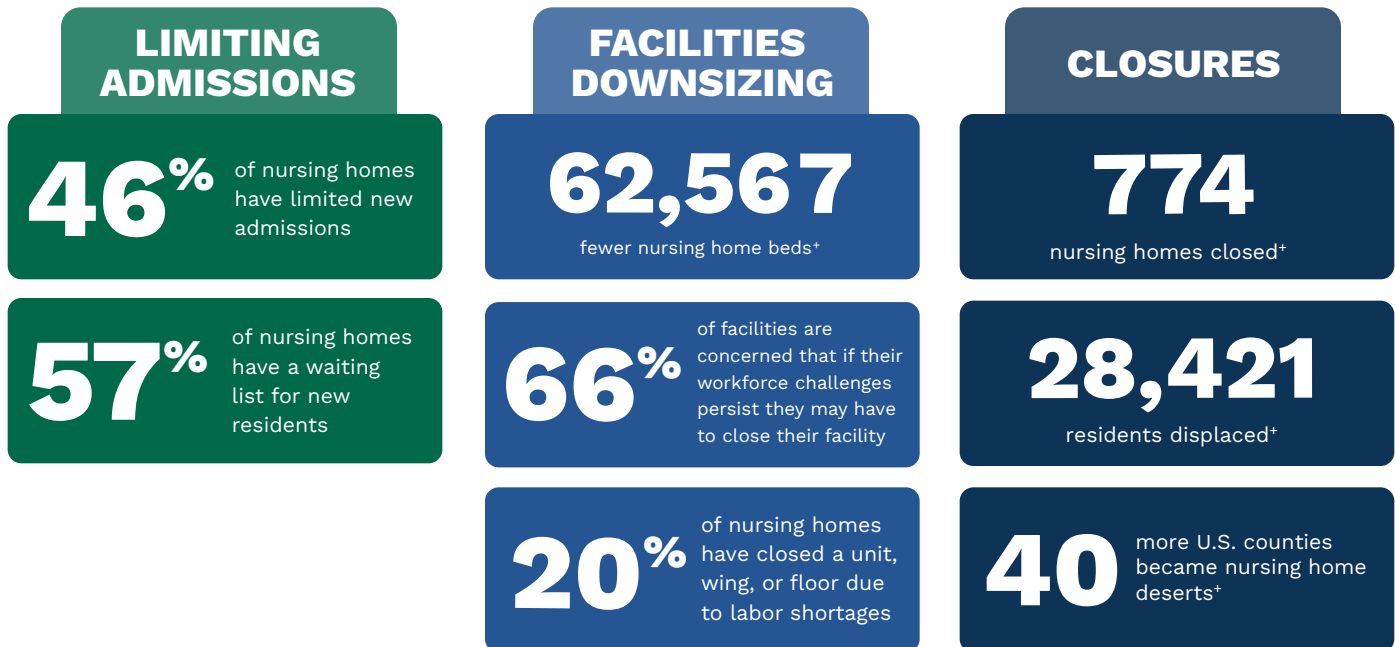


ACCESS TO CARE REPORT

August 2024

Nursing homes are a key part of the long term care continuum. Yet since the beginning of the pandemic, access to nursing home care is being squeezed by workforce shortages, increasing inflation and operational costs, and chronic government underfunding. As a result, many nursing homes are having to downsize or close their doors permanently, displacing vulnerable residents and leaving seniors and their families waiting longer or searching farther for the care they need.



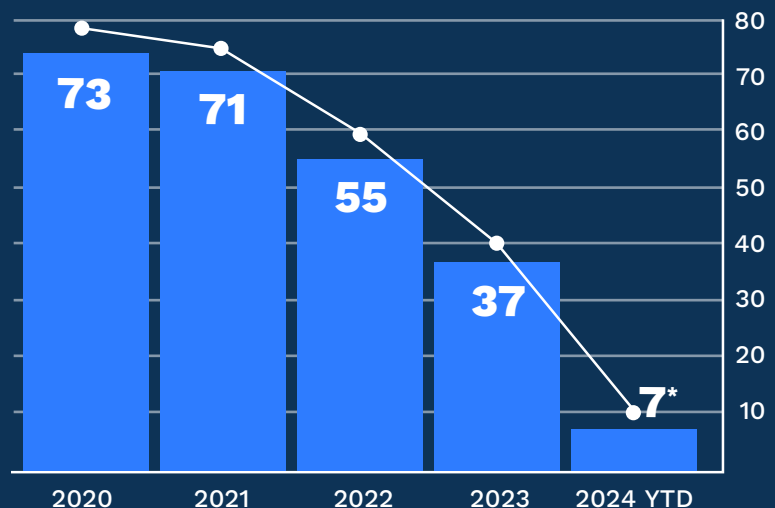
*Feb 2020-July 2024

DEMAND OUTPACING SUPPLY

The outlook on seniors' access to care is troubling without more federal support. The population is aging, the number of individuals of caregiving age is decreasing, and the rate of new nursing homes opening is declining.

Without innovative, meaningful solutions and investment into long term care, seniors will face a future of increasingly limited care options.

A Steep Decline in New Facilities

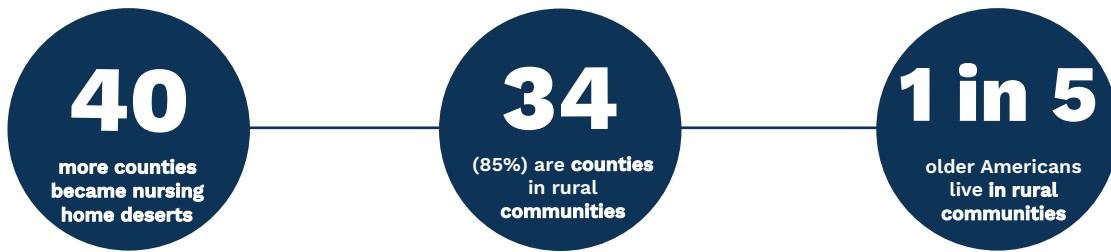


Sources:
AHCA State of the Sector Report, March 2024
AHCA Research Department analysis of CMS QCOR data, July 2024

*Data is as of July 2024

THE RURAL IMPACT: NURSING HOME DESERTS

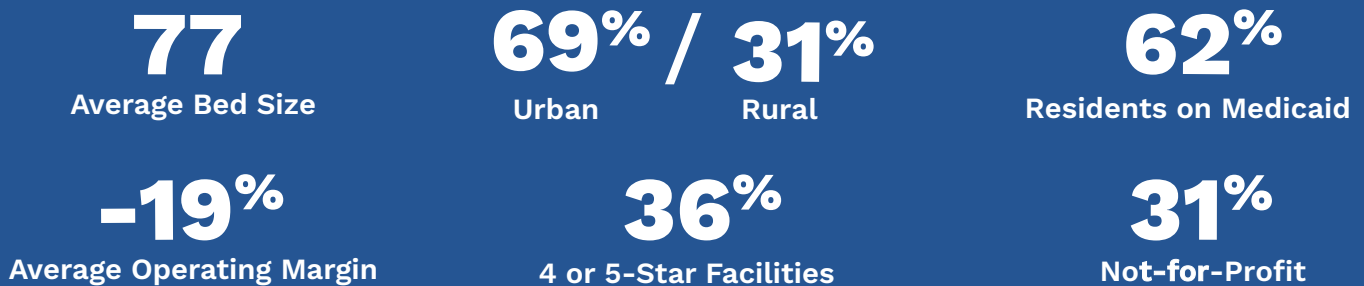
Across the United States, there are now dozens of counties that have no nursing homes. The vast majority of these counties are located in rural communities, where 1 in 5 older Americans live.



In addition, the federal staffing mandate will require that 92% of rural facilities hire more registered nurses to comply—an impossible challenge for these communities where workers are already scarce.

CLOSURES: FACILITY CHARACTERISTICS

There is no single factor that determines whether a nursing home can withstand economic pressures, limited federal support, and growing workforce challenges. More than one-third of all closures were facilities with 4- or 5-Star rankings, and one in three nursing homes were not-for-profit organizations.



THE BIG ISSUE

Access to care for seniors is at risk. The data indicates that without a shift in federal support and the rescinding of the Administration's staffing mandate, nursing home care will become increasingly harder to find. Seniors and their families, especially those in rural communities, will bear the brunt of this crisis. With a rapidly growing elderly population and caregiver shortage, policymakers must protect access to care.

290,624
MORE SENIORS
are at risk for displacement as facilities may be forced to reduce their census to comply with the federal staffing mandate or, ultimately, close altogether.